

Single-Jet Dry Meter MODULARIS

ETK-EAX, ETW-EAX



Fig. top view ETK-EAX

Our Wehrle single-jet dry meters guarantee precise measuring results and exceptional reliability. The complete separation of wet and dry parts protects the counter and guarantees readability of the values even after many years.

- Ready for integration into any AMR system
- Temperature range up to 50 °C (cold) and up to 90 °C (warm)
- Nominal flow Q_3 2,5 in m^3/h up to Q_3 4 in m^3/h
- Nominal size DN13 up to DN20
- Length 80 mm up to 130 mm
- MID measurement accuracy class (Q_3/Q_1) up to R250 horizontal and up to R80 vertical
- 360° rotatable 8-digit totalizer
- Nickel-plated brass body
- Maximum pressure load 1,6 MPa
- Protection code IP64

Single-Jet Dry Meter MODULARIS

ETK-EAX, ETW-EAX

REMOTE READING OPTIONS AMR

(Automatic Meter Reading)

MODULARIS modules:

MODULARIS Pulse Generator, S0, DIN 43864

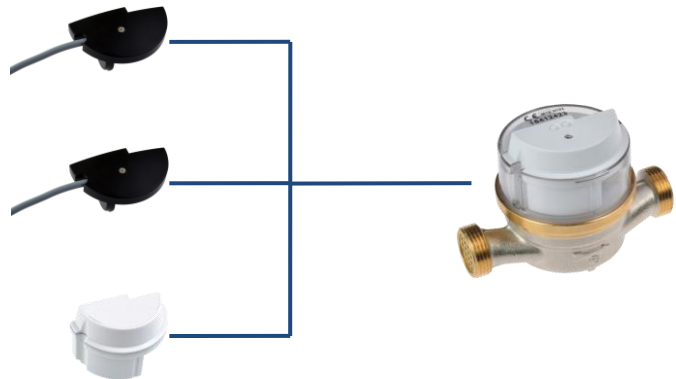
- alternatively with - 1 Litre per pulse
- 10 Litres per pulse
- 100 Litres per pulse

MODULARIS M-Bus module

according to EN 1434-3

MODULARIS Radio module, frequency range

433 MHz or 868 MHz (OMS)



Retrofitting with Modularis Radio module

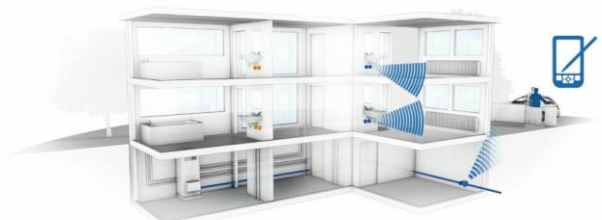
- Individually parameterizable
- Data recording via walk-by / drive-by
- Consumption data permanently stored
- Battery lifetime of up to 12 years
- Detection of rotation direction
- Manipulation detection



Maximum convenience through AMR

walk-by / drive-by solution

- Recording and storage of consumption data inside the radio module
- Reading of stored data via mobile reading device



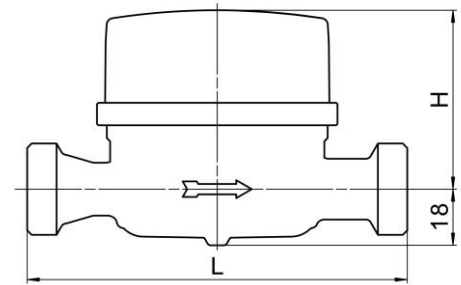
Single-Jet Dry Meter MODULARIS

ETK-EAX, ETW-EAX

TECHNICAL DATA

Model

ETK-EAX = Cold water from 0,1 °C up to 50 °C
 ETW-EAX = Warm water from 0,1 °C up to 90 °C

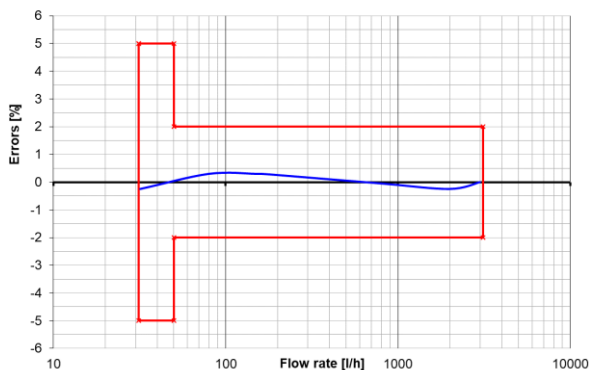


Installation position	Length h* L in mm	Height H in mm (ca.)	Nominal flow Q ₃ in m ³ /h	Nominal width DN in mm	Thread in inch	Starting flow** in l/h	Flow rate Q' at 1 bar pressure loss in l/h (ca.)	Weight in kg (ca.)
horizontal	80	52	2,5	15	G 3/4 B	8	3300	0,4
	110	52	2,5	15	G 3/4 B	8	3300	0,4
	115	52	2,5	13	G 7/8 - 3/4 B	8	3300	0,4
	115	52	2,5	15	G 3/4 B	8	3300	0,4
	130	52	2,5	15	G 3/4 B	8	3300	0,6
	130	52	2,5	20	G 1 B	8	3300	0,6
	130	52	4	20	G 1 B	15	5500	0,6

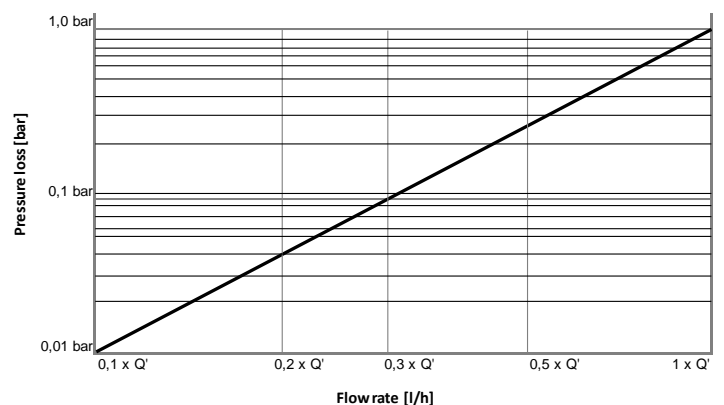
* Additional lengths available on request ** Typical values in horizontal installation position

The meter does not require any upstream or downstream straight length (U0/D0).

Typical error curve Q₃ 2,5 R80H



Typical pressure loss graph



Single-Jet Dry Meter MODULARIS

ETK-EAX, ETW-EAX

APPROVALS / CERTIFICATES

- EU-Type Examination Certificate according to 2014/32/EU (MID)
- OIML R49
- EN 14154
- KTW-BWGL / W270 (D)
- ACS (F)
- PZH (POL)

ADDITIONAL OPTIONS

- Individual labelling of totalizer and/or protection cover (on customer request)
- Protection cover in blue (cold water) or red (warm water) → Fig. ①
- Transparent cover with viewing window for litre pointer → Fig. ②
- Individual customer serial number (max. 14 figures)



Fig. ①



Fig. ②

VARIANTS



Fig. ETW-EAX (warm water)