

Single-Jet Dry Meter Composite MODULARIS

ETK-EAX KS, ETW-EAX KS



Fig. top view ETK-EAX KS

Our new model of the Wehrle Dry-Single-Jet MODULARIS meters is made of plastic. It convinces with its unmatched measurement accuracy in the market for composite-meters, even with water temperatures up to 90 °C. Its sustainability and robustness are also very convincing. The complete separation of wet and dry parts protects the counter and guarantees readability of the values even after many years.

- Ready for integration into any AMR system
- Temperature range up to 50 °C (cold) and up to 90 °C (warm)
- Nominal flow Q_3 2,5 in m³/h
- Nominal size DN15
- Length 110 mm
- MID measurement accuracy class (Q_3/Q_1) up to R250 horizontal and up to R63 vertical
- 100 % lead-free body made of recyclable plastic
- Maximum pressure load 1,0 MPa
- Protection code IP64, optional IP68 (4 weeks 1 m under water)

Single-Jet Dry Meter Composite MODULARIS

ETK-EAX KS, ETW-EAX KS

REMOTE READING OPTIONS AMR (Automatic Meter Reading)

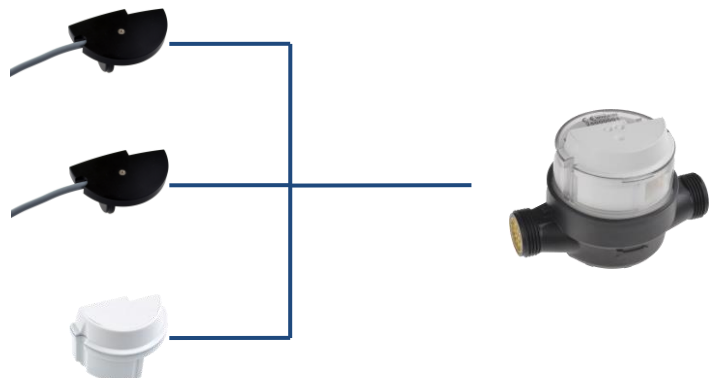
MODULARIS modules:

MODULARIS Pulse Generator, S0, DIN 43864
 alternatively with

- 1 Litre per pulse
- 10 Litres per pulse
- 100 Litres per pulse

MODULARIS M-Bus module
 according to EN 1434-3

MODULARIS Radio module, frequency range
 433 MHz or 868 MHz (OMS)



Retrofitting with Modularis Radio module

- Individually parameterizable
- Data recording via walk-by / drive-by
- Consumption data permanently stored
- Battery lifetime of up to 12 years
- Detection of rotation direction
- Manipulation detection



Maximum convenience through AMR walk-by / drive-by solution

- Recording and storage of consumption data inside the radio module
- Reading of stored data via mobile reading device



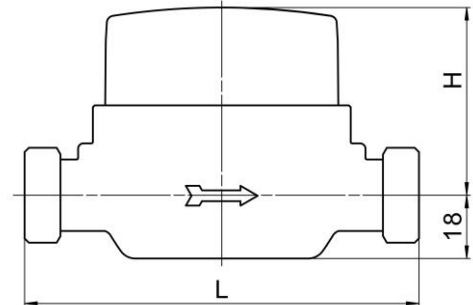
Single-Jet Dry Meter Composite MODULARIS

ETK-EAX KS, ETW-EAX KS

TECHNICAL DATA

Model

ETK-EAX KS = Cold water from 0,1 °C up to 50 °C
 ETW-EAX KS = Warm water from 0,1 °C up to 90 °C

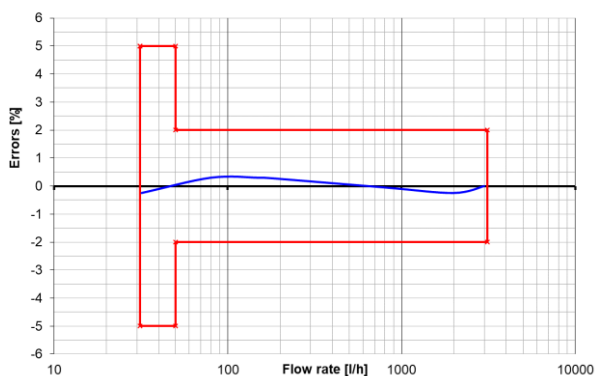


Installation position	Length L in mm	Height H in mm (ca.)	Nominal flow Q ₃ in m ³ /h	Nominal width DN in mm	Thread in inch	Starting flow* in l/h	Flowrate Q' at 1 bar pressure loss in l/h (ca.)	Weight in kg (ca.)
horizontal	110	53	2,5	15	G ¾ B	8	3300	0,2

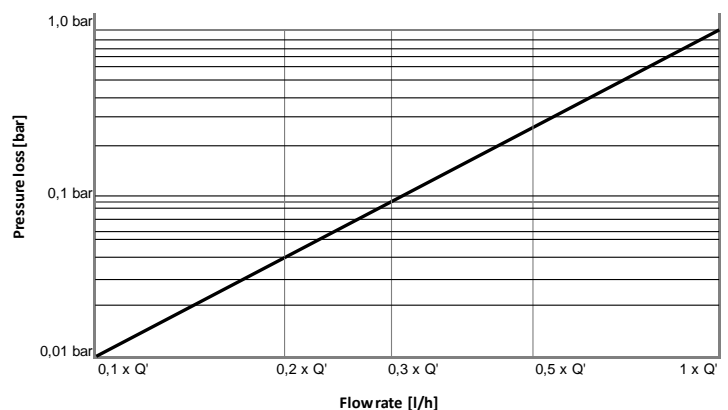
* Typical values in horizontal installation position

The meter does not require any upstream or downstream straight length (U0/D0).

Typical error curve Q₃ 2,5 R80H



Typical pressure loss graph



Single-Jet Dry Meter Composite MODULARIS

ETK-EAX KS, ETW-EAX KS

APPROVALS / CERTIFICATES / STANDARDS

- EU-Type Examination Certificate according to 2014/32/EU (MID)
- OIML R49
- EN 14154
- KTW-BWGL / W270 (D)
- PZH (POL)

ADDITIONAL OPTIONS

- Individual labelling of totalizer and/or protection cover on customer request
- Protection cover in blue (Cold water) or red (Warm water) → Fig. ①
- Transparent cover with viewing window for litre pointer



Fig. ①

VARIANTS



Fig. ETW-EAX KS (Warm water)