

Piston Meter Composite MODULARIS RTK-HCX



Fig. top view RTK-HCX

Our Wehrle Piston Meter Composite MODULARIS stands out with its high-precision measuring accuracy and, at the same time, convinces with its robust composite body showing an utmost of modern technology and technical progress.

- Ready for integration into any AMR system
- EN ISO 3822-1 : 1999 Noise Acoustic Group I
- Length 105 mm up to 190 mm
- Nominal flow rate Q_3 2,5 in m^3/h up to Q_3 4 in m^3/h
- MID measurement accuracy class (Q_3/Q_1) up to R800 irrespective
- Composite meter body with optimized stability of thread contour
- Maximum pressure load 1,6 MPa
- Temperature range up to 30 °C
- Protection code IP64

Piston Meter Composite MODULARIS

RTK-HCX

REMOTE READING OPTIONS AMR

(Automatic Meter Reading)

MODULARIS modules:

MODULARIS Pulse Generator, S0, DIN 43864

alternatively with

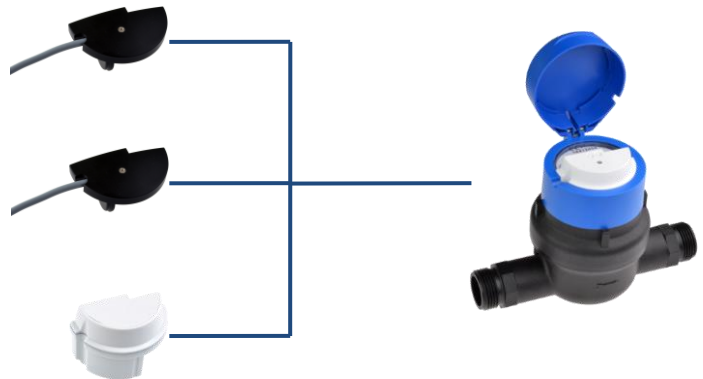
- 1 Litre per pulse
- 10 Litres per pulse
- 100 Litres per pulse

MODULARIS M-Bus module

according to EN 1434-3

MODULARIS Radio module, frequency range

433 MHz oder 868 MHz (OMS)



Retrofitting with Modularis Radio module

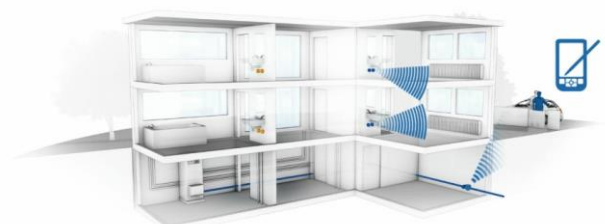
- Individually parameterizable
- Data recording via walk-by / drive-by
- Consumption data permanently stored
- Battery lifetime of up to 12 years
- Detection of rotation direction
- Manipulation detection



Maximum convenience through AMR

walk-by / drive-by solution

- Recording and storage of consumption data inside the radio module
- Reading of stored data via mobile reading device



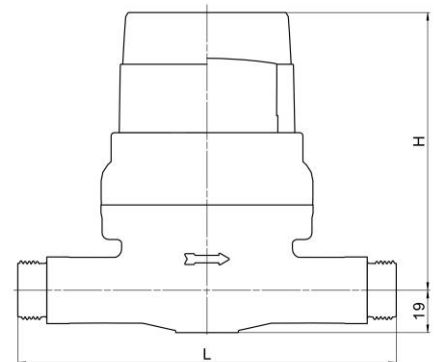
Piston Meter Composite MODULARIS

RTK-HCX

TECHNICAL DATA

Model

RTK-HCX= Cold water from 0,1 °C up to 30 °C



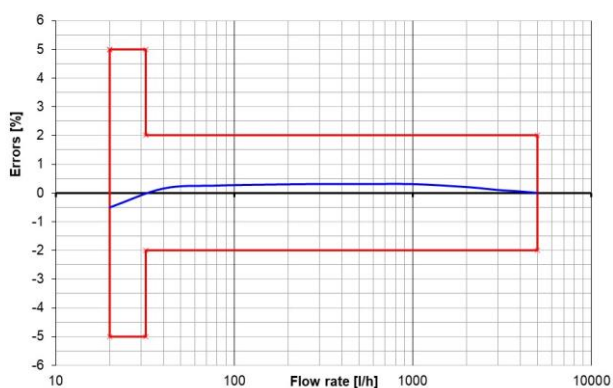
Installation position	Length* L in mm	Height H in mm (ca.)	Nominal flow Q ₃ in m ³ /h	Nominal width DN in mm	Thread in inch	Starting flow** in l/h	Flow rate Q _f at 1 bar pressure loss	Weight in kg (ca.)
irrespective	105	125	2,5	20	G 1 B	< 2	6400	0,5
	105	125	4	20	G 1 B	< 2	6400	0,5
	110	125	2,5	15	G ¾ B	< 2	5100	0,5
	115	125	2,5	15	G 7/8 - ¾ B	< 2	5100	0,5
	115	125	2,5	15	G ¾ B	< 2	5100	0,5
	165	125	2,5	15	G ¾ B	< 2	5100	0,55
	170	125	2,5	15	G ¾ B	< 2	5100	0,55
	190	125	2,5	20	G 1 B	< 2	6400	0,59
	190	125	4	20	G 1 B	< 2	6400	0,59

* Additional lengths available on request

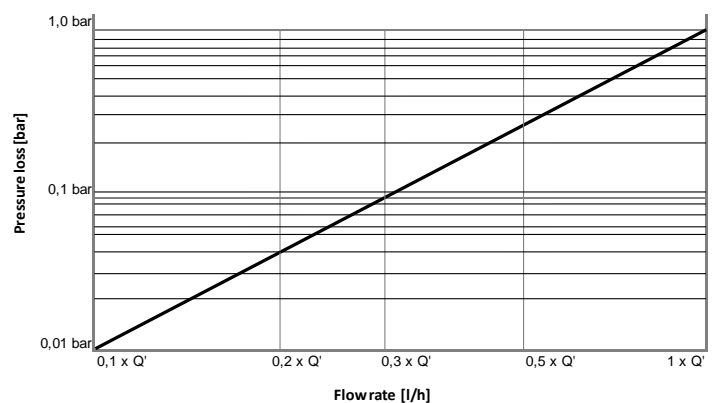
** Typical values

The meter does not require any upstream or downstream straight length (U0/D)

Typical error curve Q₃ 4 R200H



Typical pressure loss graph



Piston Meter Composite MODULARIS

RTK-HCX

APPROVALS / CERTIFICATES / STANDARDS

- EU-Type Examination Certificate according to 2014/32/EU (MID)
- OIML R49
- EN 14154
- KTW-BWGL / W270 (D)
- ACS (F)

ADDITIONAL OPTIONS

- Individual labelling of totalizer and/or protection cover (on customer request)
- Transparent cover with viewing window for litre pointer → Abb. ①
- Non-return valve



Fig. ①