

Piston Meter Cartridge Version MODULARIS

RTK-...PX



Fig. top view RTK-HPX

Our Wehrle Piston Meter Cartridge Version MODULARIS for cold water guarantees exceptional measuring results, reliability and unmatched flexibility through the interchangeable cartridge.

- Ready for integration into any AMR system
- Length 105 mm up to 190 mm
- Nominal flow Q_3 2,5 in m^3/h up to Q_3 4 in m^3/h
- MID measurement accuracy class (Q_3/Q_1) up to R250 irrespective
- Cartridge meter body made of brass
- Maximum pressure load 1,6 MPa
- Temperature range up to 30 °C
- Protection code IP64

Piston Meter Cartridge Version MODULARIS

RTK-...PX

REMOTE READOUT OPTIONS AMR

(Automatic Meter Reading)

MODULARIS modules:

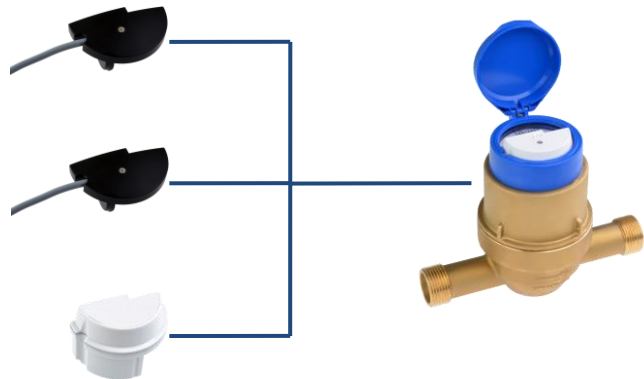
MODULARIS Pulse Generator, S0, DIN 43864

alternatively with

- 1 Litre per pulse
- 10 Litres per pulse
- 100 Litres per pulse

MODULARIS M-Bus module according to EN 1434-3

MODULARIS Radio module, frequency range 433 MHz or 868 MHz (OMS)



Retrofitting with Modularis Radio module

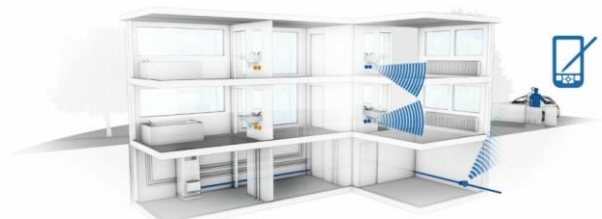
- Individually parameterizable
- Data recording via walk-by / drive-by
- Consumption data permanently stored
- Battery lifetime of up to 12 years
- Detection of rotation direction
- Manipulation detection



Maximum convenience through AMR

walk-by / drive-by solution

- Recording and storage of consumption data inside the radio module
- Reading of stored data via mobile reading device



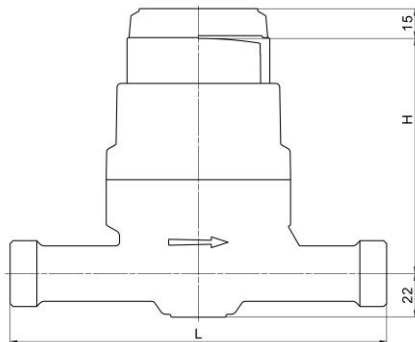
Piston Meter Cartridge Version MODULARIS

RTK-...PX

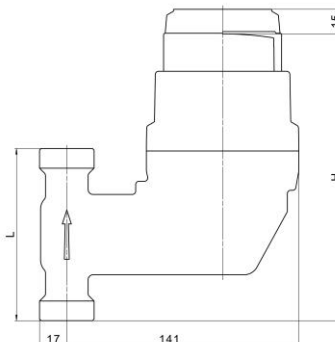
TECHNICAL DATA

Model

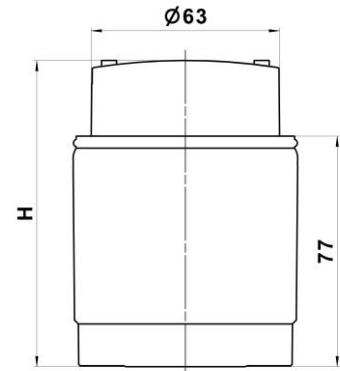
RTK-... = Cold water from 0,1 °C up to 30 °C



RTK-HPX



RTK-SPX



RTK-OPX

Installation position	Model	Length* L in mm	Height H in mm (ca.)	Nominal flow Q ₃ in m ³ /h	Nominal width DN in mm	Thread in inch	Starting flow** in l/h	Flow rate Q' at 1 bar pressure loss in l/h (ca.)	Weight in kg (ca.)
horizontal	RTK-HPX	190	119	2,5	20	G 1 B	2	5000	1,8
horizontal	RTK-HPX	190	119	4	20	G 1 B	2	5000	1,8
ascending	RTK-SPX	105	175	2,5	20	G 1 B	2	5000	2,1
ascending	RTK-SPX	105	175	4	20	G 1 B	2	5000	2,1
cartridge	RTK-OPX	-	103	4	20	-	2	5000	-

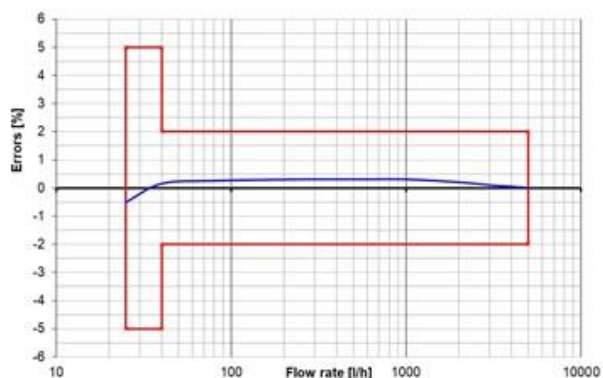
* Additional lengths available on request

** Typical values

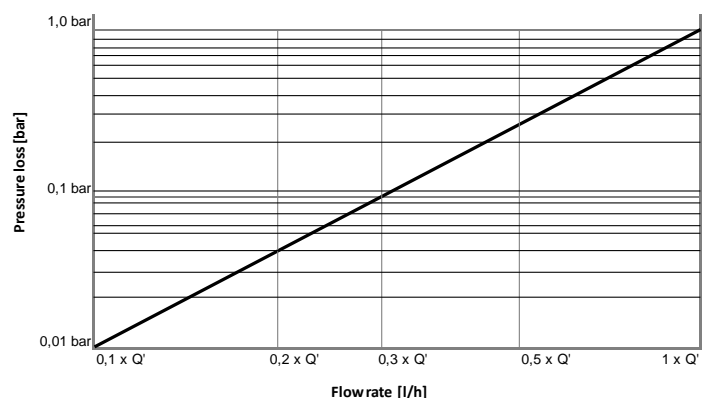
The meter does not require any upstream or downstream straight length (U0/D0).

Cylindrical Piston Meter Cartridge RTK-OPX (conformity declared) for assembly into installed WVG cartridge bodies can be ordered separately. Technical data as described above

Typical error curve Q₃ 4 R160H



Typical pressure loss graph



Piston Meter Cartridge Version MODULARIS

RTK-...PX

APPROVALS / CERTIFICATES / STANDARDS

- EU-Type Examination Certificate according to 2014/32/EU (MID)
- OIML R49
- EN 14154
- KTW-BWGL / W270 (D)

ADDITIONAL OPTIONS

- Individual labelling of totalizer and/or protection cover (on customer request)
- Transparent cover with viewing window for litre pointer → Fig. ①
- Protection cover for RTK-OPX optional
- Non-return valve for RTK-OPX optional



Fig. ①

VARIANTS



Fig. RTK-SPX (ascending pipe)



Fig. RTK-OPX (cartridge)