

## Multi-Jet Wet Meter MNK-...WV



Fig. top view MNK-HWV

Our Wehrle multi-jet wet meters present exceptional reliability and set standards due to durability.

- Optional: Prepared for installation into various remote readout systems
- Temperature range up to 30 °C (cold)
- Nominal flow  $Q_3$  2,5 in  $m^3/h$  up to  $Q_3$  25 in  $m^3/h$
- Nominal size DN15 up to DN50
- Length 105 mm up to 300 mm
- MID measurement accuracy class ( $Q_3/Q_1$ ) up to R250 horizontal and up to R80 vertical
- 5-roller totalizer
- WVG brass body (DN50: grey cast iron)
- Maximum pressure load 1,6 MPa
- Protection code IP68

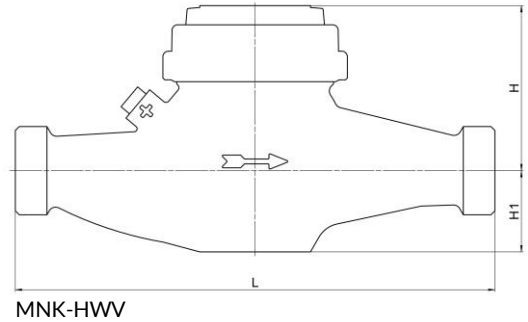
# Multi-Jet Wet Meter

## MNK-...WV

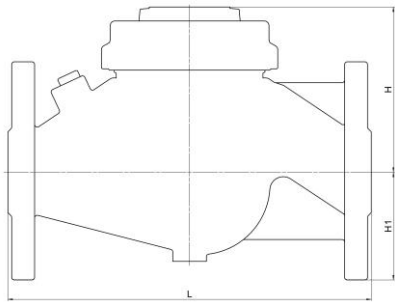
### TECHNICAL DATA

#### Model

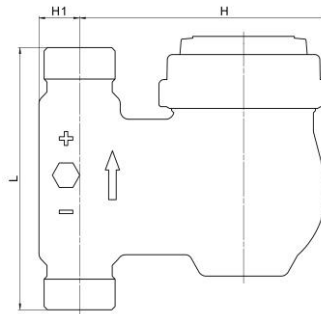
MNK-... = Cold water from +0,1 °C up to +30 °C



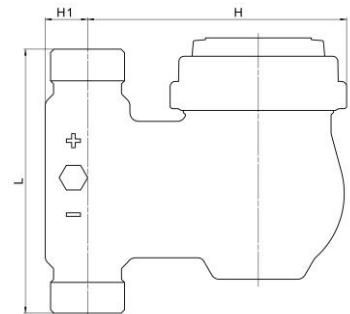
MNK-HWV



MNK-HWV (Anschlussgewinde F50)



MNK-SWV



MNK-FWV

Installation position	Model	Length* L in mm	Height H in mm (ca.)	H1 in mm	Nominal flow Q3 in m <sup>3</sup> /h	Nominal width DN in mm	Thread in inch	Starting flow** in l/h	Flow rate Q' at 1 bar pressure loss	Weight in kg (ca.)
horizontal	MNK-HWV	165	84	34	2,5	15	G ¾ B	5	4500	1,5
		190	84	32	4	20	G 1 B	5	5750	1,6
		260	90	44	6,3	25	G 1 ¼ B	10	11000	2,9
		260	90	44	10	25	G 1 ¼ B	12	13500	2,9
		260	90	44	10	32	G 1 ½ B	12	13500	2,9
		270	123	51	25	50	G 2 ½ B	30	32000	10
		270	123	76	25	50	F50	30	32000	12,5
		300	104	55	16	40	G B 2	20	24000	4,9
		300	121	57	25	50	G 2 ½ B	30	32000	9,6
		300	112	70	25	50	F50	30	32000	11,5
ascending	MNK-SWV	105	130	18	2,5	20	G 1 B	5	5500	1,7
		105	130	18	4	20	G 1 B	5	5500	1,7
		150	148	24	6,3	25	G 1 ¼ B	10	12500	2,8
		150	148	24	10	25	G 1 ¼ B	12	12500	2,8
		150	181	30	16	40	G 2 B	30	26000	4,7
descending	MNK-FWV	105	130	17	4	20	G 1 B	5	5500	1,9

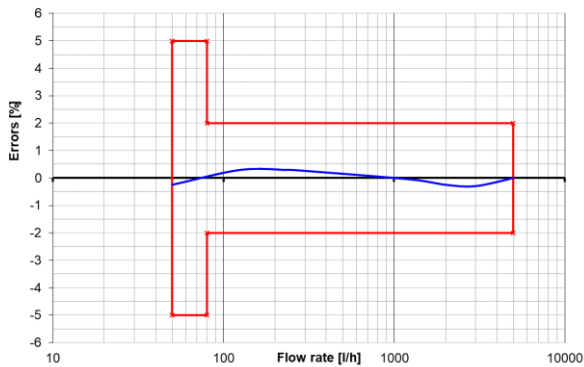
\* Additional lengths available on request

\*\* Typical values in horizontal installation position

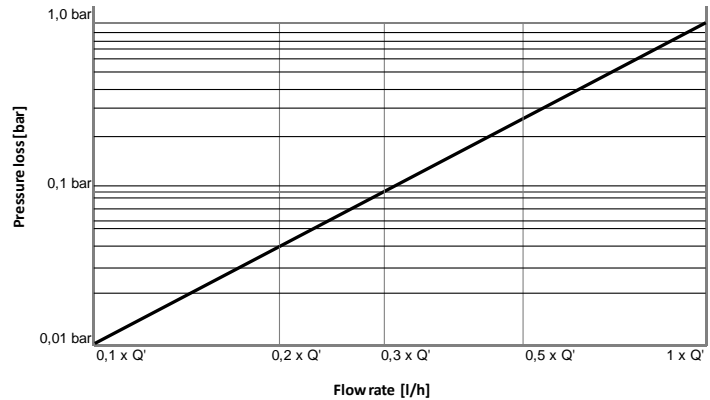
The meter does not require any upstream or downstream straight length (U0/D0).

# Multi-Jet Wet Meter MNK-...WV

Typical error curve Q<sub>3</sub> 4 R80H



Typical pressure loss graph



## APPROVALS / CERTIFICATES / STANDARDS

- EU-Type Examination Certificate according to 2014/32/EU (MID)
- OIML R49
- EN 14154
- KTW-BWGL / W270 (D)

## ADDITIONAL OPTIONS

- Individual labelling of totalizer and/or protection cover (on customer request)
- Insert back-flow preventer
- Individual customer serial number (max. 14 figures)
- Prepared for remote readout (optional on customer request, see variant MNK-HWO)

## VARIANTS



Fig. MNK-SWV (ascending pipe)



Fig. MNK-HWO  
(remote readout options)

# Multi-Jet Wet Meter

## Variante MNK-HWO

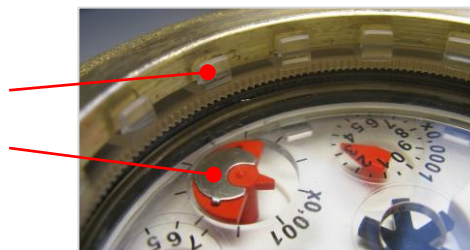
### REMOTE READING OPTIONS (AMR)

Pulse module for wet meter\*,  
 S0 according to DIN 43864  
 alternatively with - 10 Litres per pulse  
 - 100 Litres per pulse



\* only possible with meters  
 or measuring inserts with:

- Fixing ring (transparent)
- Modulation pointer  
 AMR



### Maximum convenience through AMR

- Recording and storage of consumption data
- Access to building no longer necessary
- Possible optional connection to an external radio pulse adaptor (433 MHz, international protection code IP68, battery lifetime 12 years)



### Characteristics pulse module for wet meter

- High-quality sensor technology
- Safe from manipulation
- Battery lifetime 12 years
- Sturdy design due to encapsulated electronics
- Protection class IP 68
- Functional reliability due to internal power supply

